

Marine park meeting

A COMMUNITY meeting about the establishment of marine parks on Eyre Peninsula will be held on Monday, August 31 at 7pm at the Port Lincoln Council chambers.

All interested persons are welcome to attend where the Minister for Environment and Conservation Jay Weatherill will be speaking and addressing community concerns.

The council chambers are on Level 1 of the Civic Centre at 60 Tasman Terrace.

Gusts up to 80km

WINDS of up to 80 kilometres an hour swept across Port Lincoln on Monday.

Severe weather warnings were posted by the Bureau of Meteorology on Monday and Tuesday for people on Lower Eyre Peninsula and other areas around the State.

A cold front was expected to produce damaging winds, averaging 60 to 70km/h on Tuesday while winds of up to 120km/h were forecast for Monday.

The severe weather kept Port Lincoln State Emergency Services busy with callouts of large trees blown over

Tracking our great white sharks

By Sophie Wandel

sophie.wandel@ruralpress.com

SCIENTISTS are in Port Lincoln to track great white sharks around the Neptune Islands - a place they say is pivotal on the shark highway as it's where they stop to feed on seals.

They are trying to find out where and when the Neptune sharks travel to and also what drives their movements, such as where their prey moves and if weather and water temperature play any part.

CSIRO senior research scientist Barry Bruce from Hobart is here with a colleague for a few days to position 10 listening stations around the Neptune Islands at depths of about 30 metres.

Hundreds of these acoustic listening stations are located around Australia with the sole purpose of tracking fish species.

Mr Bruce said over the years, scientists have been able to track the movements of great whites and also monitor their population.

"What drives these movement patterns is critical in population monitoring."

He said the number of great whites was unknown but had probably not changed much since they were made a protected species 10 years ago.

"When you don't see them, it's because they're somewhere else ... we are seeing cycles but we have no long term trend yet which is what we are working towards."

Scientists have learnt a lot about great whites since they began tagging them with satellite and acoustic tags.

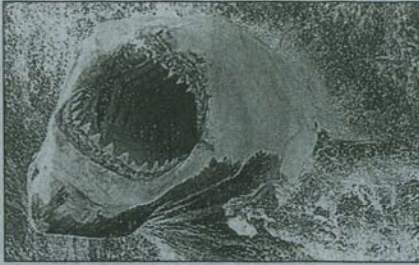
"We learn a lot about how the ecosystem works from the top order predators."

Mr Bruce said the more that is known about great whites, the more scientists can work towards minimising incidents of shark attacks.

"We can start mapping out where interactions are likely to occur and give us a better understanding of risk areas to protect both us and them."

Mr Bruce thanked local businesses who helped with the listening stations.

DID YOU KNOW?



- Great white sharks stay around the Port Lincoln area to feed on seals but they are only temporary visitors.
- They often stay around the Neptune Islands for as brief as a few days or as long as several weeks.
- They travel west as far as Exmouth and east and north as far as Rockhampton.
- Great whites have been tracked travelling to New Zealand.
- They are often found between the coast and 200m offshore but sometimes go into open waters and dive to depths of 1000m.
- A female great white shark grows to about 18 to 20-years-old before she can reproduce and is about 5 metres long.
- A female can produce up to 10 pups about once every three years.
- The shark carries the pups for about 18 months.
- When the pups are born they are about 1.5 metres long.

Wandering dog destroyed

ONE dog had to be destroyed and another given a new home after they were found wandering in the Cummins district.

The general inspector at the Lower Eyre Peninsula District Council attended to numerous dogs wandering throughout the district over the past month.

The owners were located for the majority of the dogs.



SHARK TRACKING: CSIRO senior research scientist Barry Bruce from Hobart is in Port Lincoln to position 10 acoustic listening stations around the Neptune Islands to track great white sharks. They are trying to figure out what factors drive their movement patterns such as feed or weather.

Little progress on footy merger